

# Accessories

Accessories are available for all above-deck waterproof panels and below-deck panels.



## Accessories Table of Contents



**WEATHERDECK™ WATERPROOF  
PANEL ACCESSORIES**  
page 77



**CONTURA WATERPROOF CIRCUIT  
BREAKER PANEL ACCESSORIES**  
page 78



**PANEL ACCESSORIES**  
pages 79–81



**12 VOLT DC SOCKET-PLUG SYSTEM**  
page 80



**DIGITAL DIMMERS**  
page 82



**LABELS**  
pages 83–87

## WeatherDeck™ Toggle Switches (Single Pole)

Available in a variety of switch and pole configurations to meet specific circuit requirements

- Specifically manufactured for use in WeatherDeck™ Waterproof Panels (pages 49–50)
- Nickel-plated brass and phenolic non-corrosive construction

### Specifications

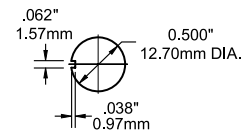
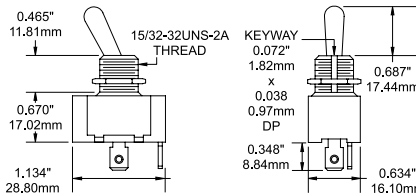
<b>I<sub>mxo</sub></b> Amperage Maximum Operating	10 Amps @ 250 Volts AC 15 Amps @ 125 Volts AC 15 Amps @ 12 Volts DC
Terminal Size	0.25" (6.35mm)
Terminal Type	Quick Connect Tab



4150

PN	Pole/Throw	Action	Weight lb (kg)
4150	SPST	OFF-ON	0.10 (0.05)
4151	SPST	OFF-(ON)	0.10 (0.05)
4152	SPDT	ON-OFF-ON	0.10 (0.05)
4153	SPDT	(ON)-OFF-ON	0.10 (0.05)
4154	SPDT	(ON)-OFF-(ON)	0.10 (0.05)

( ) = Momentary



Cutout Dimensions

## WeatherDeck™ Toggle Switch (Double Pole)

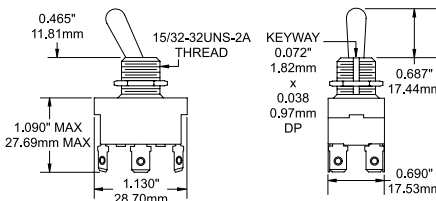
Often used for combining navigation lights and anchor lights with shared switch

- For use in WeatherDeck™ Waterproof Panels (pages 49–50)
- Nickel-plated brass and phenolic non-corrosive construction

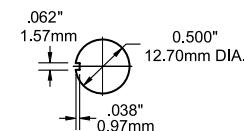
### Specifications

<b>V<sub>mxo</sub></b> Voltage Maximum Operating	30 Volts DC
<b>I<sub>mxo</sub></b> Amperage Maximum Operating	5A
Terminal Size	0.25" (6.35mm)
Terminal Type	Quick Connect Tab

PN	Pole/Throw	Action	Weight lb (kg)
4155	DPDT	ON-OFF-ON	0.10 (0.05)



4155



Cutout Dimensions

## WeatherDeck™ Toggle Switch Boots

Replaces boots found on all WeatherDeck™ panels

- For mounting on WeatherDeck™ Waterproof Panel Switches
- UV resistant material resists discoloration and cracking

**67** Rated IP67—temporary immersion for 30 minutes

### Specifications

Case Material	UV Resistant Silicone Rubber
Thread Material	Nickel Plated Brass
Thread	15/32"-32UNS-2A

PN	Description	Weight lb (kg)
4138	Black Toggle Switch Waterproof Boot	0.04 (0.02)



4138

## Water Resistant Fuse Holder

Replaces fuse holder found on Contura Waterproof Fuse Panels

- Easy to open

**66** Rated IP66 on front—withstands water from heavy seas

### Specifications

<b>V<sub>mxo</sub></b> Voltage Maximum Operating	32 Volts DC
<b>I<sub>mxo</sub></b> Amperage Maximum Operating	20 Amps
Mounting Hole	0.50" (12.70mm)

PN	Description	Weight lb (kg)
5021	Water Resistant Fuse Holder	0.02 (0.01)



5021

# Waterproof Accessories

## Water Resistant Contura Switches

Specifically manufactured for use in Blue Sea Systems Contura Waterproof Panels\*

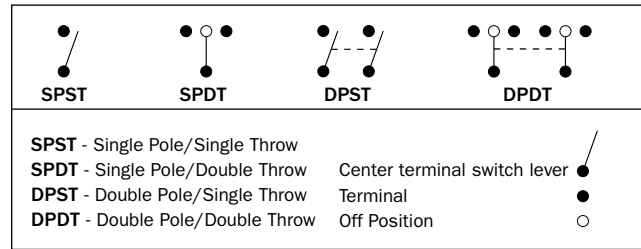
- Vibration, shock, thermoshock, moisture and salt spray resistant

### Regulatory

**IP** Meets UL 1500 and ISO 8846 external ignition protection requirements

### Specifications

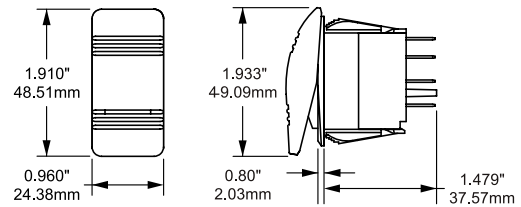
<b>I<sub>mxo</sub></b> Amperage Maximum Operating	20 Amps @ 12 Volts DC 15 Amps @ 24 Volts DC
<b>I<sub>oc</sub></b> (LED) Amperage Operating Current	18 Milliampers
Lighted	LED rated 100,000 hours 1/2 life
Seals	Internal and external gasket panel seal
Temperature Rating	-40°C to 85°C
Mounting Hole	1.45" x 0.83" (36.83mm x 21.08mm)



See page 37 for ML-Series Remote Battery and ACR (SPDT) Switches  
See page 51 for Contura Waterproof Panels

PN Gray	PN Black	Pole/Throw	Action	Embedded LEDs	Weight lb (kg)
8230	8282	SPST	OFF-ON	1	0.09 (0.04)
8231	8292	SPST	OFF-(ON)	0	0.09 (0.04)
8232	8283	SPDT	ON-OFF-ON	2	0.09 (0.04)
8233	8284	SPDT	(ON)-OFF-ON	1	0.09 (0.04)
8234	8285	SPDT	(ON)-OFF-(ON)	0	0.09 (0.04)
8218	8287	DPST	OFF-ON	1	0.09 (0.04)
8219	8288	DPST	OFF-(ON)	0	0.09 (0.04)
8220	8286	DPDT	ON-OFF-ON	2	0.09 (0.04)
8221	8289	DPDT	(ON)-OFF-ON	1	0.09 (0.04)
8222	8290	DPDT	(ON)-OFF-(ON)	0	0.09 (0.04)
8275	-	DPDT	ON-ON	2	0.25 (0.11)

( ) = Momentary



## Contura Switch Actuators

Directly replaces actuators found on all Blue Sea Systems Contura Waterproof Panels

- Mounts on any Blue Sea Systems Water Resistant Contura Switch

PN Gray	PN Black	Number of Lenses	Embedded LEDs	Weight lb (kg)
8299	8296	-	-	0.03 (0.01)
8297	8294	1	1	0.03 (0.01)
8298	8295	2	2	0.03 (0.01)
8293	Actuator Removal Tool			0.04 (0.02)

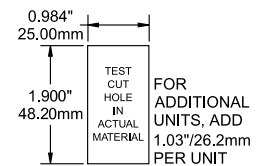
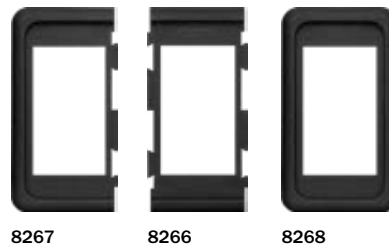


## Contura Switch Mounting Panels

Modular design permits easy assembly in groups of varying sizes and numbers

- Mounting panels available in 1, 3, and 6 fixed position models
- Designed for mounting in 6 different panel thicknesses:  
0.06" (1.57mm)   0.09" (2.36mm)   0.13" (3.17mm)  
0.19" (4.75mm)   0.25" (6.35mm)   0.38" (9.52mm)

PN	Description	Width in (mm)	Height in (mm)
8267	End Mounting Panel	1.19 (30.23)	2.30 (58.42)
8266	Center Mounting Panel	1.03 (26.16)	2.30 (58.42)
8268	1 Position Mounting Panel	1.34 (34.04)	2.30 (58.42)
8259	3 Position Mounting Panel	3.40 (86.36)	2.30 (58.42)
8260	6 Position Mounting Panel	6.49 (164.85)	2.30 (58.42)



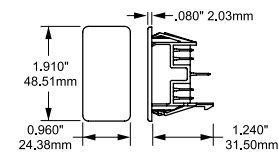
Cutout Dimensions

## Contura Switch Mounting Panel Plug

Covers Contura Switch mounting hole for future switch installation

- For use with Contura Switch Mounting Panels (see above)

PN	Description	Weight lb (kg)
8278	Mounting Panel Plug	0.06 (0.03)



8278

\* Use of standard Contura Switches will not maintain the integrity of the Contura Waterproof Panels.

Specifications subject to change. See [www.blueseasystems.com](http://www.blueseasystems.com) for current information.

## Panel Switches

Mounts in an A-Series toggle circuit breaker aperture to provide multiple throw and switch configurations when circuit protection is provided elsewhere

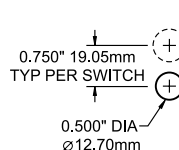
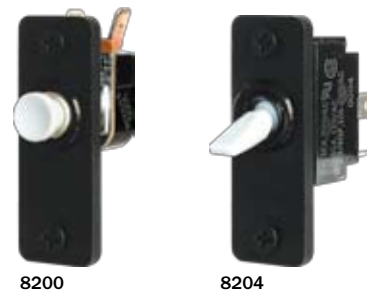
- Perfect for generator starters, bilge pumps, horns, wipers, engine controls and any other application that requires switching action other than ON-OFF or different pole configuration separate from circuit protection
- Panel switches mount in Blue Sea Systems A-Series Toggle Circuit Breaker Panels
- For use with A-Series Toggle Circuit Breaker Mounting Panel (page 72)
- Supplied with mounting adapter for standard 5/8" circuit breaker mounting hole
- Nickel-plated brass and phenolic non-corrosive construction

### Specifications

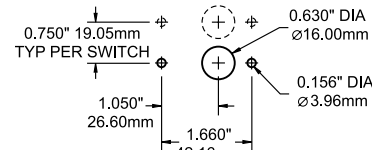
	Toggle Switches	Push Button Switch
<b>I<sub>mxo</sub></b> Amperage Maximum Operating	10A @ 250V AC 15A @ 125V AC 15A @ 32V DC	3A @ 250V AC 6A @ 125V AC 6A @ 32V DC
Terminal Size	0.25" (6.35mm)	0.25" (6.35mm)
Terminal Type	Quick Connect Tab	Quick Connect Tab
Actuator Color	White	White

PN	Type	Pole/Throw	Action	Weight lb (kg)
8200	Push Button	SPST	OFF-(ON)	0.07 (0.03)
8204	Toggle	SPST	OFF-ON	0.08 (0.04)
8205	Toggle	SPST	OFF-(ON)	0.08 (0.04)
8206	Toggle	SPDT	ON-OFF-ON	0.08 (0.04)
8207	Toggle	SPDT	(ON)-OFF-ON	0.08 (0.04)
8208	Toggle	SPDT	(ON)-OFF-(ON)	0.08 (0.04)
8209	Toggle	DPST*	OFF-ON-(ON) OFF-OFF-(ON)	0.08 (0.04)
8210	Toggle	DPST	OFF-ON	0.08 (0.04)
8211	Toggle	DPDT	ON-OFF-ON	0.08 (0.04)
8212	Toggle	DPDT	(ON)-OFF-ON	0.08 (0.04)

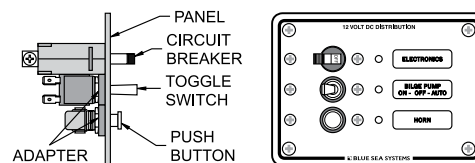
( ) = momentary



Cutout Dimensions Without Adapter



Cutout Dimensions With Adapter



Panel Switch Mounting Diagram

## Circuit Breaker Mounting Screws

Fits all A-Series and C-Series circuit breakers

- Sold in packages of 6

PN	Description	Weight lb (kg)
8035	6-32 x 1/4" Flat Head	0.03 (0.01)



8035

## Toggle Circuit Breaker Panel Plug

Black plug fits standard A-Series toggle circuit breaker apertures

PN	Description	Weight lb (kg)
8037	Toggle Circuit Breaker Plug	0.03 (0.01)



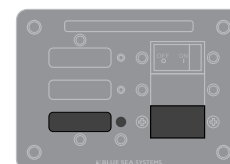
8037

## Rocker Circuit Breaker Panel Plug

Black plug fits Rocker circuit breaker aperture

- Includes plug mounting hardware, circuit breaker panel plug, LED plug and blank label

PN	Description	Weight lb (kg)
4110	Rocker Circuit Breaker Plug	0.03 (0.01)



4110

## Push Button Reset-Only Circuit Breaker Adapter

Provides a method of mounting Push Button Reset-Only Circuit Breakers into the magnetic circuit breaker aperture

- Adapts Push Button Reset-Only Circuit Breaker (page 38)

PN	Description	Weight lb (kg)
4111	Circuit Breaker Panel Adapter	0.03 (0.01)



4111

\* Progressive Two Circuit Switch - maintains circuit one while momentarily switching circuit two

## Label Backlight System

Adds label backlighting to Blue Sea Systems traditional metal circuit breaker panels

- Designed for 12 or 24 Volt systems
- Connects to sources via two 20 AWG wire leads
- Reverse polarity protection built-in
- 8065 snaps apart for 5 or 3 positions

PN	Description	Weight lb (kg)
8065	8/5/3 Positions	0.08 (0.04)
8384	4 Positions	0.05 (0.02)
8069	10 Positions	0.09 (0.04)
8383	13 Positions	0.11 (0.05)



8065

### Specifications

**V<sub>mxo</sub>** Voltage Maximum Operating 24 Volts DC  
**I<sub>oc</sub>** Amperage Operating Current <7 mA per label

## LED Indicator Lights

Directly replaces all LEDs used in Blue Sea Systems traditional metal circuit breaker panels

- Simple push-in installation mounts in any thickness material
- Useful as general indicator and alarm lights



### Specifications

**V<sub>mxo</sub>** Voltage Maximum Operating See table to right  
**I<sub>oc</sub>** Amperage Operating Current See table to right  
 Mounting Hole Size 11/64" (4.36mm)  
 Power Consumption 5 mW

PN	Color	V <sub>mxo</sub>	I <sub>oc</sub>	Weight lb (kg)
8033	Amber	24V DC	5 mA DC	0.03 (0.01)
8171	Red	24V DC	5 mA DC	0.03 (0.01)
8172	Green	24V DC	5 mA DC	0.03 (0.01)
8169	Amber	120V AC	0.5 mA AC	0.03 (0.01)
8066	Red	120V AC	0.5 mA AC	0.03 (0.01)
8034	Green	120V AC	0.5 mA AC	0.03 (0.01)
8167	Amber	230V AC	0.25 mA AC	0.03 (0.01)
8166	Red	230V AC	0.25 mA AC	0.03 (0.01)
8134	Green	230V AC	0.25 mA AC	0.03 (0.01)

## 12 Volt Socket-Plug System

Corrosion resistant materials to ensure solid contact and low voltage drop

- Designed to withstand the rigors of wet environments and constant vibration
- Large contact surfaces for good electrical connection
- Twist lock system—plug locks securely into socket
- Internal strain relief and cord seal
- Nickel plated copper alloy used for all current carrying components
- Plug has a sealing ring around the shaft to keep out spray and make it seat firmly in the outlet
- Plug features an LED ON-indicating light, moisture proof sealing ring, strain relief and built-in 10A fuse
- Front panel, rear panel, or surface mount
- Socket features a watertight cap, easy installation and interlocks with plug
- 1012 and 1013 Heavy duty 18 gauge wire
- 1012 Cord reaches up to 6 feet

### Specifications

**V<sub>mxo</sub>** Voltage Maximum Operating 15 Volts DC  
**I<sub>mxo</sub>** Amperage Maximum Operating 15 Amps DC (socket)  
**I<sub>mxo</sub>** Amperage Maximum Operating 10 Amps DC (plug)

PN	Description	Weight lb (kg)
1010	Plug	0.08 (0.04)
1011	Socket	0.10 (0.05)
1012	Single Plug with Single Socket Extension	0.54 (0.24)
1013	Single Plug with Dual Socket Extensions	0.50 (0.23)
1014	Mounting Bracket for Socket (1011)*	0.07 (0.03)
1015	Plug and Socket Set - Includes 1010 and 1011	0.20 (0.09)



1010

1011



1012



1013

See pages 20–21 for a full selection of related products located in the 360 Panel System section of this catalog.

\* Socket not included

## Toggle Guard

Protects toggle circuit breakers from accidental switching

- Fits all A-Series single pole toggle circuit breakers (page 72)
- Fits all panel switches (page 79)
- Can be used on any brand of circuit breaker panel (not including 360 Panel System) using standard toggle type circuit breakers
- Uses circuit breaker mounting screw holes
- Includes 2 mounting screws

### Specifications

Mounting Hole Size #6 Flat Head Screw

PN	Description	Weight lb (kg)
4100	Toggle Guard	0.05 (0.02)



4100 (2 shown)

## AC A-Series Circuit Breaker Lockout Slide

Enables safe management of multiple AC sources which use double pole circuit breakers

- Allows only 1 double pole AC circuit breaker to be activated at a time
- Guarantees that AC power from 2 or 3 sources (shore power, genset, or inverter) will not be mixed
- Fits all double pole A-Series Toggle Circuit Breakers (page 60)
- Uses circuit breaker mounting screw holes
- Includes mounting screws

### Specifications

Mounting Screw Size #6 Flat Head Screw

PN	Poles	AC Sources	Weight lb (kg)
4125	2	2	0.04 (0.02)
4126	2	3	0.06 (0.03)



4125



4126

## AC C-Series Toggle Circuit Breaker Lockout Slide

Enables safe management of multiple AC sources which use double or triple pole circuit breakers

- Allows only 1 of a pair of double pole or triple pole AC circuit breakers to be activated at a time
- Guarantees that AC power from 2 sources (shore power, genset, or inverter) will not be mixed
- Fits all double or triple pole C-Series Toggle Circuit Breakers (page 62)
- Uses circuit breaker mounting screw holes
- Requires no special panel modification
- Includes mounting screws

### Specifications

Mounting Screw Size #6 Flat Head Screw

PN	Poles	Positions	Weight lb (kg)
4130	2	2	0.06 (0.03)
4131	3	2	0.17 (0.08)



4130



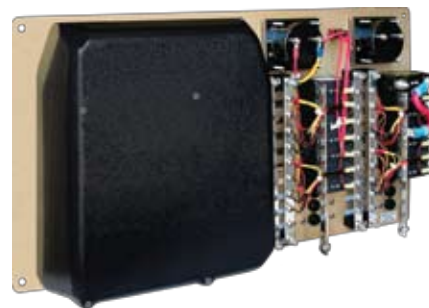
4131

## AC Insulating Covers

Provides electrical insulation for many of Blue Sea Systems traditional metal circuit breaker panels

- Provides electrical insulation for exposed panel backs
- Provides mechanical protection for panel backs protruding into lockers
- Lightweight material is easily drilled for wire entrance and exit
- Meet ABYC safety requirements for panels with combined AC and DC loads
- PN 4029 and 4031—Used only for Blue Sea Systems toggle circuit breaker panels

PN	Description	Weight lb (kg)
4026	Cover for 5-1/4" x 3-3/4"	0.12 (0.05)
4027	Cover for 5-1/4" x 7-1/2"	0.20 (0.09)
4028	Cover for 10-1/2" x 7-1/2"	0.50 (0.23)
4029	Cover for 1 Column x 8 Position + Meter	0.24 (0.11)
4031	Cover for 2 Column x 10 Position + Meter	0.38 (0.17)



4031 installed on 8086 AC/DC Circuit Breaker Panel (pages 74–75)

## Digital Dimmers

Provides continuous voltage control from 0 to 100% of input voltage

- Last setting memory–Power returns to previous setting with optional ON/OFF switch
- Supports multiple switch locations
- Water resistant, sealed housings
- Requires SPDT momentary (ON)–OFF–(ON) switch such as PN 8216, 8291 (see below) or 8208 (page 79)

Specifications	7501	7502	7503	7505
<b>V<sub>mxo</sub></b> Voltage Maximum Operating	32V DC	32V DC	32V DC	32V DC
<b>I<sub>c</sub></b> Amperage Continuous	2 Amps	5 Amps	10 Amps	20 Amps
<b>T<sub>mno</sub></b> Temperature Minimum Operating	-20°C	-20°C	-20°C	-20°C
<b>T<sub>mxo</sub></b> Temperature Maximum Operating	+85°C	+85°C	+85°C	+85°C
<b>I<sub>oc</sub></b> (0% output) Amperage Operating Current	5mA (0.005A)	5mA (0.005A)	5mA (0.005A)	5mA (0.005A)
Surge Rating: 10 sec	5 Amps	10 Amps	25 Amps	50 Amps
Internal Overcurrent Protection	10 Amps	20 Amps	50 Amps	70 Amps

See page 79 for Momentary (ON)–OFF–(ON) Panel Switch 8208

PN	Width in (mm)	Height in (mm)	Depth in (mm)	Weight lb (kg)
7501	1.67 (42.42)	2.05 (52.07)	1.50 (38.10)	0.28 (0.13)
7502	2.16 (54.86)	3.06 (77.72)	1.60 (40.64)	0.40 (0.18)
7503	2.16 (54.86)	3.06 (77.72)	1.60 (40.64)	0.58 (0.26)
7505	2.16 (54.86)	3.06 (77.72)	1.60 (40.64)	0.56 (0.25)



## Water Resistant Contura Dimmer Switches

Pre-labeled momentary switches are an ideal control switch for Blue Sea Systems dimmers

- Mounts in Blue Sea Systems Contura waterproof panels (page 51)
- Legend–BRIGHT and DIM
- Contura Switch Mounting Panels (page 78)
- For use with Digital Dimmers (see above)
- Ignition Protected - safe for installation aboard gasoline powered boats

### Specifications

<b>V<sub>mxo</sub></b> Voltage Maximum Operating	20 Amps @ 12 Volts DC 15 Amps @ 24 Volts DC
Terminal Size	0.25" (6.35mm)
Terminal Type	Quick Connect Tab
Seals	Internal and External Gasket Panel Seal
Temperature Rating	-40°C to 85°C
Mounting Hole	1.45" (36.83mm) x 0.83" (21.08mm)

PN	Color	Pole/Throw	Action
8216	Gray	Single/Double	(ON)-OFF-(ON)
8291	Black	Single/Double	(ON)-OFF-(ON)

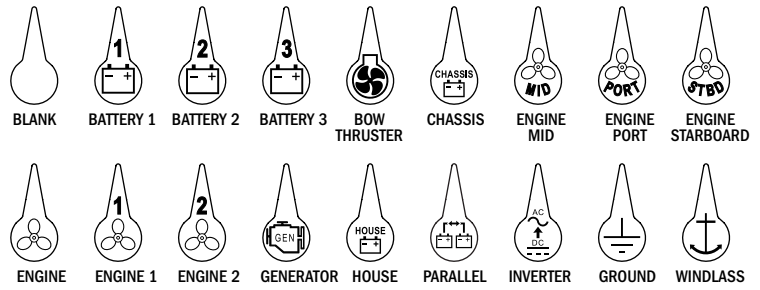


## ICON Circuit Identification Label Kit

Used on any m-Series, e-Series and HD-Series battery switches (pages 26–28)

- Reinforced, weatherproof material

PN	Color	Description	Quantity
7902	White	ICON Circuit Identification Labels	18 Labels

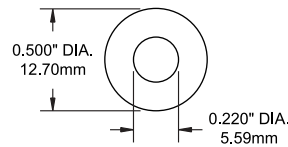


## 24-Hour Round Label

Fits around any Blue Sea Systems panel LED

- Reinforced, weatherproof material
- Sold in packages of 12
- Can be used on any standard panel
- Included with Battery Main Distribution Panels (pages 29–30)

PN	Color	Description
4140	Black	24 Hour Round Label

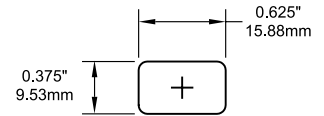


## Small Format Labels

Used with most Blue Sea Systems Contura Waterproof Panels (page 51) or ST Blade Fuse Block (page 55)

- Reinforced, weatherproof material

PN	Color	Description	Quantity
8214	Black	Small Format Labels	60 Labels
8217	Gray	Small Format Labels	60 Labels



### Small Format Label Sets (8214 and 8217)

(BLANK)	BATTERY CHARGER	CHART PLOTTER	GAS ALARM	OUTLETS	STROBE LIGHT
12 VOLT DC	BILGE	DECK LIGHTS	GPS	RADIO	TRICOLOR LIGHT
24 VOLT DC	BILGE PUMP	DEPTH SOUNDER	HORN	RADAR	TRIM TABS
ACCESSORY	BLOWER	DOWN RIGGER	IGNITION	REFRIGERATION	VHF
AERATOR	BOW LIGHT	ELECTRONICS	INSTR. LIGHTS	RUNNING LIGHTS	WASH DOWN
ANCHOR LIGHT	CABIN	FAN	INVERTER	SEARCH LIGHT	WATER PRESSURE
AUTO PILOT	CABIN LIGHTS	FISH FINDER	KNOT METER	SPARE	WATER PUMP
BAIT PUMP	CB RADIO	FISHING LIGHT	LIGHTS	SPREADER LIGHTS	WINCHES
BAITWELL	CELLULAR PHONE	FLOOD LIGHTS	LIVWELL	STEAMING LIGHT	WINDLASS
BATTERY	CHARGER INVERTER	FUEL PUMP	NAV LIGHTS	STEREO	WIPERS

## Square Format Labels

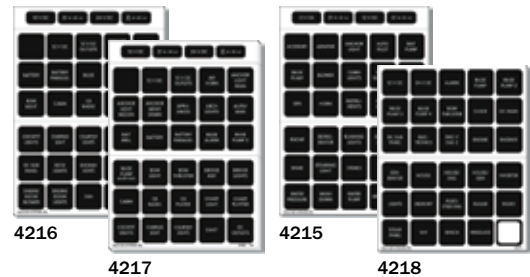
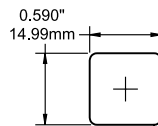
Used with 360 Panel Systems (pages 4–23), Battery Management Panels (pages 29–30) and WeatherDeck™ Panels (pages 49–50)

- Reinforced, weatherproof material
- Available for purchase in sets or individually (pages 86–87)
- For a list of labels included, see page 85

To purchase individual labels online go to [www.blueseas.com](http://www.blueseas.com).

PN	Color	Description	Quantity
4215	Black	DC Labels	30 Labels
4218	Black	DC Labels	30 Labels
4216	Black	DC Labels	60 Labels
4217	Black	DC Labels	120 Labels
4205	Black	DC Panel Basic	30 Labels
4206	Black	AC Panel Basic	30 Labels
4207	Black	DC Panel Extended	120 Labels
4208	Black	AC Panel Extended	120 Labels
6522	Black	AC Panel Extended (French)	120 Labels
6523	Black	DC Panel Extended (French)	120 Labels
6524	Black	AC Panel Extended (Italian)	120 Labels
6525	Black	DC Panel Extended (Italian)	120 Labels

Note: 6522/6524 are based on 4208 and 6523/6525 are based on 4207

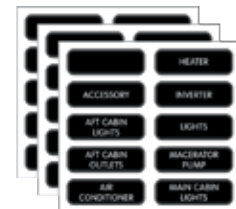
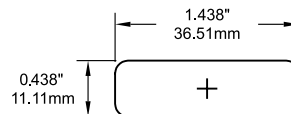


## Large Format Labels

Used on Traditional Metal Panels, ST Glass Fuse Block and selected Contura Waterproof Panels

- Reinforced, weatherproof material
- Used on Contura Waterproof Fuse Panels 8053, 8054 (page 51)
- Available for purchase in sets or individually (page 86–87)
- For a list of labels included, see page 85

To purchase individual labels online go to [www.blueseas.com](http://www.blueseas.com).



8031

PN	Color	Description	Quantity
8031	Black	AC Panel Basic	30 Labels
8067	Black	AC Panel Extended	120 Labels
8030	Black	DC Panel Basic	30 Labels
8039	Black	DC Panel Extended	120 Labels
6398	Black	AC Panel Extended (French)	120 Labels
6399	Black	DC Panel Extended (French)	120 Labels

Note: 6398 is based on 8067 and 6399 is based on 8039

## Square and Large Format Panel Label Sets

### DC Label Set (4215)

ACCESSORY  
AERATOR  
ANCHOR LIGHT  
AUTOPILOT  
BAIT PUMP  
BILGE PUMP  
BLOWER  
CABIN LIGHTS  
DEPTH SOUNDER  
ELECTRONICS  
GPS  
HORN  
INSTRUMENTS  
KNOTMETER  
NAV LIGHTS

RADAR  
REFRIGERATOR  
RUNNING LIGHTS  
SEARCH LIGHT  
SPARE  
SPREADER LIGHTS  
STEAMING LIGHT  
STEREO  
TRIM TABS  
VHF  
WASH DOWN  
WATER PRESSURE  
WATER PUMP  
WINDLASS  
WIPERS

### DC Label Set (4218)

12 VOLT DC  
24 VOLT DC  
ALARM  
BILGE PUMP  
BILGE PUMP 2  
BILGE PUMP 3  
BILGE PUMP 4  
BOW THRUSTER  
CLOCK  
DC MAIN  
DC SUB PANEL  
ELECTRONICS  
ENGINE  
ENGINES  
ENG 1/ENG 2

GENERATOR  
HOUSE  
HOUSE/ENG  
HOUSE/GEN  
INVERTER  
LIGHTS  
MEMORY  
PORT/STBD ENG  
RADAR  
RADIO  
SOLAR PANEL  
VHF  
WINCH  
WINDLASS  
Blank (Write On)

### DC Panel Basic (4205 and 8030)

ACCESSORY  
ANCHOR LIGHT  
AUTOPILOT  
BILGE PUMP  
BLOWER  
COMPASS LIGHT  
DEPTH SOUNDER  
ELECTRONICS  
ENGINE INSTRUMENTS  
FAN  
FOREDECK LIGHT  
FWD CABIN LIGHTS  
GPS  
HORN  
KNOTMETER

LIGHTS  
MACERATOR PUMP  
MAIN CABIN LIGHTS  
RADAR  
REFRIGERATOR  
RUNNING LIGHTS  
SAILING INSTRUMENTS  
SPARE  
SPREADER LIGHTS  
STEAMING LIGHT  
STEREO  
STROBE LIGHT  
TRICOLOR LIGHT  
VHF  
WATER PRESSURE

### AC Panel Basic (4206 and 8031)

(BLANK)  
ACCESSORY  
AFT CABIN LIGHTS  
AFT CABIN OUTLETS  
AIR CONDITIONER  
AIR CONDITIONER 2  
APPLIANCES  
BATTERY CHARGER  
CABIN OUTLETS  
COMPUTER  
ENTERTAINMENT CENTER  
FWD CABIN LIGHTS  
FWD CABIN OUTLETS  
GALLEY  
GALLEY OUTLETS

HEATER  
INVERTER  
LIGHTS  
MACERATOR PUMP  
MAIN CABIN LIGHTS  
MAIN CABIN OUTLETS  
MICROWAVE  
OUTLETS  
REFRIGERATOR  
SPARE  
STOVE  
TV/STEREO  
VCR  
WASHER/DRYER  
WATER HEATER

### DC Label Set (4216)

(BLANK)  
12 VOLT DC  
12 VOLT DC OUTLETS  
ANCHOR WASH DOWN  
BAITWELL  
BATTERY  
BATTERY PARALLEL  
BILGE  
BILGE PUMP 2

BILGE PUMP ON-OFF-AUTO  
BOW LIGHT  
CABIN  
CB RADIO  
CELLULAR PHONE  
CHART LIGHT  
CHART PLOTTER  
COCKPIT LIGHTS  
COMPASS LIGHT

COURTESY LIGHTS  
DAVIT  
DC OUTLETS  
DC SUB PANEL  
DECK LIGHTS  
DOCKING LIGHTS  
DOWN RIGGER  
ELECTRIC HATCH  
ENGINE ROOM BLOWER

ENGINE ROOM LIGHTS  
FAN  
FISH FINDER  
FISHING LIGHT  
FISHWELL PUMP  
FLOOD LIGHTS  
FRESH WATER PUMP  
FUEL PUMP  
GALLEY OUTLETS

GAS ALARM  
GPS/PLOTTER  
HEAD  
IGNITION  
INSTRUMENT LIGHTS  
LIGHTS  
LIVWELL  
MACERATOR PUMP  
NAV LIGHT ANCHOR-OFF-NAV

OUTLETS  
PUMPOUT  
RADIO  
SEAWATER WASH DOWN  
SHOWER SUMP PUMP  
SSB  
STERN LIGHT  
STROBE LIGHT  
TRICOLOR LIGHT

TROLLING MOTOR  
WASHDOWN  
WATER MAKER  
WINCHES  
WIPER PORT  
WIPER STBD

### DC Label Set (4217)

(BLANK)  
12 VOLT DC  
12 VOLT DC OUTLETS  
24 VOLT DC  
AIR HORN  
ANCHOR LIGHT MAIN  
ANCHOR LIGHT MIZZEN  
ANCHOR WASH DOWN  
APPLIANCES  
ARCH LIGHTS  
AUTO/MAN  
BAITWELL  
BATTERY  
BATTERY PARALLEL  
BILGE ALARM  
BILGE PUMP 2  
BILGE PUMP ON-OFF-AUTO  
BOW LIGHT

BOW THRUSTER  
BRIDGE INSTRUMENTS  
BRIDGE LIGHTS  
CABIN  
CB RADIO  
CD PLAYER  
CHART LIGHT  
CHART PLOTTER  
COCKPIT LIGHTS  
COMPASS LIGHT  
COURTESY LIGHTS  
DAVIT  
DC OUTLETS  
DC SUB PANEL  
DECK LIGHTS  
DEFROSTER  
DEPTH/SPEED  
DIMMER

DISCHARGE PUMP  
DOCKING LIGHT PORT  
DOCKING LIGHT STBD  
DOCKING LIGHTS  
DOWN RIGGER  
ELECTRIC HATCH  
ENGINE HATCH  
ENGINE INSTRUMENTS  
ENGINE ROOM BLOWER  
ENGINE ROOM LIGHTS  
ENGINE SHUTDOWN  
ENTRY STEP  
FAN  
FAN 2  
FIRE ALARM  
FIRE EXT  
FISH FINDER  
FISHING LIGHT

FISHWELL PUMP  
FLOOD LIGHTS  
FLYBRIDGE  
FLYBRIDGE ELECTRONICS  
FLYBRIDGE LIGHTS  
FOG LIGHTS  
FOREDECK LIGHT  
FRESH WATER PUMP  
FRESH WATER WASH DOWN  
FUEL PUMP  
FUEL TRANSFER  
FURLER JIB  
FURLER MAINSAIL  
GALLEY  
GAS ALARM  
GPS/PLOTTER  
HAILER  
HAM RADIO

HEAD  
HEATER  
IGNITION  
INSTRUMENT LIGHTS  
INTERCOM HAILER  
LAZARETTE LIGHTS  
LIGHTER  
LIGHTS  
LIVWELL  
LOCKER LIGHTS  
LPG CONTROL  
MAIN  
MAST LIGHTS  
MASTHEAD LIGHT  
MIZZEN FLOOD  
NAVIGATION ELECTRONICS  
NAVIGATION INSTRUMENTS  
NAV LIGHT ANCHOR OFF NAV

ON-OFF  
OUTLETS  
PUMP  
PUMPOUT  
RADIO  
ROD LOCKER  
RUDDER ANGLE INDICATOR  
SAILING CONTROLS  
SAILING INSTRUMENTS  
SALT WATER PUMP  
SEAWATER WASH DOWN  
SHOWER SUMP PUMP  
SOLAR PANEL  
SSB  
START-STOP  
STERN LIGHT  
STROBE LIGHT  
SUMP PUMP

TRANSFER  
TRICOLOR LIGHT  
TROLLING MOTOR  
WASHDOWN PUMP  
WASHDOWN  
WINCHES  
WIND GENERATOR  
WIND INSTRUMENTS  
WINDSHIELD WASHER  
WIPER CENTER  
WIPER PORT  
WIPER STBD

### DC Panel Extended Label Sets (4207 and 8039)

(BLANK)  
12 VOLT DC  
12 VOLT DC OUTLETS  
AFT CABIN  
AFT HEAD  
ALARM SYSTEM  
ANCHOR WASH DOWN  
BAIT PUMP  
BILGE ALARM  
BILGE PUMP 2  
BRIDGE INSTRUMENTS  
CABIN 2 LIGHTS  
CABIN 3 LIGHTS  
CABIN 4 LIGHTS  
CABIN FANS  
CABIN LIGHTS  
CB RADIO  
CELLULAR PHONE

CHART LIGHT  
CHART PLOTTER  
COCKPIT LIGHTS  
COLOR SOUNDER  
COMM ELECTRONICS  
DC LIGHTS  
DC MAIN  
DC OUTLETS  
DC REFRIGERATOR  
DC SUB PANEL  
DECK LIGHTS  
DECK LIGHTS AFT  
DECK LIGHTS FWD  
DEPTH RECORDER  
DEPTH/SPEED  
DESALINATOR  
DIMMER  
DINING AREA LIGHTS

DOCKING LIGHTS  
EMERGENCY LIGHTS  
ENGINE ROOM BILGE ALARM  
ENGINE ROOM LIGHTS  
ENGINE ROOM PANEL MAIN  
ENGINE ALARM  
EXTERIOR LIGHTS  
FAN 2  
FIRE ALARM  
FISHING LIGHT  
FLOOD LIGHTS  
FLYBRIDGE ELECTRONICS  
FLYBRIDGE LIGHTS  
FRESH WATER PUMP  
FRESH WATER WASH DOWN  
GALLEY LIGHTS  
GPS/PLOTTER  
HAILER

HAM RADIO  
HEAD  
HEAD LIGHTS  
HEAD LIGHTS 2  
HEATER 2  
HELM ELECTRONICS  
HELM GAUGES  
HELM INSTRUMENTS  
HIGH WATER ALARM  
HOLDING TANK  
HOLDING TANK ALARM  
HOLDING TANK PUMP  
INSTRUMENT LIGHTS  
INSTRUMENTS  
INTERCOM  
INTERIOR LIGHTS  
LIGHTS 2  
LIVWELL

LOG  
LORAN  
MAIN CABIN  
MAP LIGHT  
MAST LIGHTS  
NAV STATION ELECTRONICS  
NAV STATION GAUGES  
NAV STATION INSTRUMENTS  
NAV STATION LIGHTS  
NAVIGATION ELECTRONICS  
NAVIGATION INSTRUMENTS  
NAVIGATION LIGHTS  
RACK LIGHTS  
RADIO  
SALOON  
SALOON LIGHTS  
SAT/COM  
SAT/NAV

SATELLITE DISH  
SEARCHLIGHT  
SEAWATER TEMP  
SEAWATER WASH DOWN  
SECURITY SYSTEM  
SHOWER SUMP PUMP  
SONAR  
SPEED/LOG  
SSB  
SUB PANEL  
SUMP PUMP  
TELEPHONE SYSTEM  
TRACK LIGHTS  
TRANSFER PUMP  
TRIM TABS  
TV  
TV/VCR  
UTILITY

VIDEO PLOTTER  
WATER ALARM  
WATER MAKER  
WATER PUMP  
WEATHER FAX  
WEATHER INSTRUMENT  
WINCHES  
WIND INSTRUMENTS  
WINDEX LIGHT  
WIPER PORT  
WIPER STBD  
WIPERS

### AC Panel Extended Label Sets (4208 and 8067)

(BLANK)  
120 VOLT AC OUTLETS  
120 VOLTS AC / 60 HZ  
AC COMPRESSOR  
AC FAN  
AC MAIN  
AC PANEL  
AC POWER  
AC REFRIGERATOR  
AC SUB PANEL  
AFT CABIN  
AFT HEAD  
AIR CONDITIONER 3  
AIR CONDITIONER 4  
ALARM SYSTEM  
AMPLIFIER  
AUDIO/VIDEO SYSTEM  
BATTERY CHARGER 2

BRIDGE LIGHTS  
BRIDGE OUTLETS  
CABIN  
CABIN 2  
CABIN 2 LIGHTS  
CABIN 2 OUTLETS  
CABIN 3  
CABIN 3 LIGHTS  
CABIN 3 OUTLETS  
CABIN 4  
CABIN 4 LIGHTS  
CABIN 4 OUTLETS  
CABIN HEATER  
CABIN LIGHTS  
CCTV  
CHARGER/INVERTER  
COCKPIT LIGHTS  
COCKPIT REFRIGERATOR

COMPARTMENT LIGHT  
COOKTOP  
DECK LIGHTS  
DIMMER  
DINING AREA LIGHTS  
DINING AREA OUTLETS  
DISHWASHER  
DISPOSAL  
DRYER  
EMERGENCY LIGHTS  
ENGINE ROOM LIGHTS  
ENGINE ROOM OUTLETS  
EXHAUST FAN  
EXTERIOR LIGHTS  
FAN  
FAN 2  
FAN 3  
FAN 4

FLOOD LIGHTS  
FREEZER  
FURNACE  
GALLEY APPLIANCES  
GALLEY LIGHTS  
GARBAGE DISPOSAL  
GENERATOR 1  
GFI OUTLET  
HALLWAY LIGHTS  
HEAD 2 OUTLETS  
HEAD 3 OUTLETS  
HEAD 4 OUTLETS  
HEAD LIGHTS  
HEAD LIGHTS 2  
HEAD LIGHTS 3  
HEAD LIGHTS 4  
HEAD OUTLETS  
HEADLIGHTS

HEATER 2  
HEATER 3  
HEATER 4  
HOOD FAN  
ICEMAKER  
INTERIOR LIGHTS  
INVERTER OUTLET  
ISOLATION TRANSFORMER  
LAZARETTE LIGHTS  
LECTRASAN  
LIGHTS 2  
LIGHTS 3  
LIGHTS 4  
LIGHTS AFT  
LIGHTS FWD  
MAIN  
MAIN BREAKER  
MAIN CABIN

NAV STATION LIGHTS  
OUTLETS 2  
OUTLETS 3  
OUTLETS 4  
OUTLETS DECK  
OUTLETS EXTERIOR  
OUTLETS INTERIOR  
RACK OUTLETS  
RANGE  
REFRIGERATOR/FREEZER  
REVERSE POLARITY  
SALOON  
SALOON HEATER  
SALOON LIGHTS  
SALOON OUTLETS  
SATELLITE DISH  
SHIP  
SHORE

SHORE POWER  
STEREO  
STOVE/MICROWAVE  
SUB PANEL  
TELEPHONE SYSTEM  
TRACK LIGHTS  
TRASH COMPACTOR  
TV  
UPS SYSTEM  
VACUUM  
VIDEO SYSTEM  
WASHER  
WATER MAKER

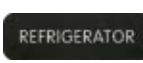
## Individual Square and Large Format Panel Labels

To order individual labels, please indicate the Part No. (6520 or 8063) and the Label No.

Example:  
Square Format  
6520-0044



Large Format  
8063-0356



Label No.	Label Text	Label No.	Label Text	Label No.	Label Text	Label No.	Label Text
0001	LABEL #1	0485	BEDROOM SLIDEOUT	0125	DECK LIGHTS AFT	0576	FLOAT SWITCH
0002	LABEL #2	0055	BILGE	0126	DECK LIGHTS FWD	0190	FLOOD LIGHTS
0003	(BLANK)	0056	BILGE ALARM	0127	DECK LIGHTS PORT	0191	FLOSCAN
0005	12 VOLT DC	0057	BILGE ALARM 2	0128	DECK LIGHTS STBD	0192	FLYBRIDGE
0004	12 VOLT DC OUTLETS	0058	BILGE ALARM 3	0129	DEFROSTER	0193	FLYBRIDGE ELECTRONICS
0499	12 VOLT OUTLETS INSIDE	0059	BILGE ALARM 4	0130	DEPTH RECORDER	0194	FLYBRIDGE LIGHTS
0500	12 VOLT OUTLETS OUTSIDE	0060	BILGE LIGHTS	0131	DEPTH SOUNDER	0195	FLYBRIDGE OUTLETS
0502	120 VOLT / 60 HZ SHORE POWER	0061	BILGE PUMP	0132	DEPTH/SPEED	0196	FOG LIGHTS
0007	120 VOLT AC / 60 HZ	0062	BILGE PUMP 2	0133	DESALINATOR	0197	FOREDECK LIGHT
0006	120 VOLT AC OUTLETS	0063	BILGE PUMP 3	0134	DIMMER	0539	FORWARD BILGE
0516	120/240V 60 HZ	0064	BILGE PUMP 4	0135	DINING AREA LIGHTS	0198	FREEZER
0517	120/240V 60 HZ SHORE POWER	0453	BILGE PUMP ON-OFF-AUTO	0136	DINING AREA OUTLETS	0199	FRESH WATER
0526	230 VOLTS AC 50 HZ	0559	BLANK WHITE WRITABLE	0137	DISCHARGE PUMP	0200	FRESH WATER PUMP
0010	24 VOLT DC	0065	BLOWER	0567	DISCHARGE PUMP 2	0201	FRESH WATER PUMP 2
0009	24 VOLT DC OUTLET	0066	BOAT DAVIT	0568	DISCHARGE PUMP 3	0202	FRESH WATER PUMP 3
0008	240 VOLTS AC	0067	BOOM LIGHT	0138	DISHWASHER	0203	FRESH WATER PUMP 4
0460	240 VOLTS AC / 60 HZ	0068	BOW LIGHT	0139	DISPOSAL	0204	FRESH WATER WASH DOWN
0515	250 VOLT 50HZ SHORE POWER	0069	BOW THRUSTER	0140	DIVE COMPRESSOR	0482	FRONT SLIDEOUT
0468	250 VOLTS AC / 50 HZ	0070	BRIDGE	0141	DOCKING LIGHT PORT	0561	FUEL GAUGE
0462	AC BUS 1	0071	BRIDGE INSTRUMENTS	0142	DOCKING LIGHT STBD	0205	FUEL PRIMER PUMP
0011	AC COMPRESSOR	0072	BRIDGE LIGHTS	0143	DOCKING LIGHTS	0206	FUEL PUMP
0012	AC FAN	0073	BRIDGE OUTLETS	0144	DOWN RIGGER	0207	FUEL PUMP 2
0013	AC MAIN	0074	CABIN	0145	DRYER	0208	FUEL PUMP 3
0014	AC PANEL	0075	CABIN 2	0146	DUMP VALVES	0209	FUEL PUMP 4
0015	AC POWER	0501	CABIN 2 FAN	0566	ECU	0210	FUEL TANK HEATER
0016	AC REFRIGERATOR	0076	CABIN 2 LIGHTS	0147	ELECTRIC HATCH	0211	FUEL TRANSFER
0017	AC SUB PANEL	0077	CABIN 2 OUTLETS	0469	ELECTRONIC CONTROL UNIT	0507	FUME DETECTOR
0532	ACCENT LIGHT	0078	CABIN 3	0148	ELECTRONICS	0212	FURLER JIB
0018	ACCESSORY	0079	CABIN 3 LIGHTS	0149	EMERGENCY BACKUP SYS	0213	FURLER MAINSAIL
0019	ADF	0080	CABIN 3 OUTLETS	0150	EMERGENCY LIGHTS	0214	FURLER SPINNAKER
0020	AERATOR	0081	CABIN 4	0151	EMERGENCY PUMPS	0215	FURNACE
0021	AFT CABIN	0082	CABIN 4 LIGHTS	0547	ENG 1/ENG 2	0216	FWD CABIN
0022	AFT CABIN LIGHTS	0083	CABIN 4 OUTLETS	0545	ENGINE	0217	FWD CABIN LIGHTS
0023	AFT CABIN OUTLETS	0084	CABIN FAN	0158	ENGINE ALARM	0218	FWD CABIN OUTLETS
0536	AFT CABIN SUMP	0085	CABIN HEATER	0159	ENGINE BLOCK HEATER	0529	FWD DISCHARGE PUMP
0530	AFT DISCHARGE PUMP	0086	CABIN LIGHTS	0160	ENGINE CONTROL PORT	0528	FWD HEAD
0024	AFT HEAD	0087	CABIN OUTLETS	0161	ENGINE CONTROL STBD	0219	GALLEY
0025	AIR COMPRESSOR	0088	CABLEMASTER	0162	ENGINE CONTROLS	0220	GALLEY APPLIANCES
0026	AIR CONDITIONER	0089	CASSETTE PLAYER	0163	ENGINE DRIVEN REFRIG	0221	GALLEY DRAIN
0027	AIR CONDITIONER 2	0090	CB RADIO	0164	ENGINE EXHAUST FAN	0222	GALLEY FAN
0028	AIR CONDITIONER 3	0091	CCTV	0165	ENGINE HATCH	0223	GALLEY LIGHTS
0029	AIR CONDITIONER 4	0092	CD PLAYER	0166	ENGINE HEATER PORT	0224	GALLEY OUTLETS
0030	AIR CONDITIONER PUMP	0093	CELLULAR PHONE	0167	ENGINE HEATER STBD	0490	GALVANIC ISOLATOR
0031	AIR HORN	0537	CENTER LIVEWELL	0168	ENGINE INSTRUMENTS	0225	GARBAGE DISPOSAL
0573	AIS	0094	CHARGER/INVERTER	0169	ENGINE OIL PAN PUMP	0226	GAS ALARM
0544	ALARM	0095	CHART LIGHT	0152	ENGINE ROOM BILGE ALARM	0227	GENERAL PURPOSE
0032	ALARM SYSTEM	0096	CHART PLOTTER	0153	ENGINE ROOM BLOWER	0523	GENERATOR
0461	ALTERNATOR	0097	CHOKE	0154	ENGINE ROOM HEATER	0228	GENERATOR 1
0033	ALTERNATOR DISCONNECT	0098	CIRCULATOR PUMP	0155	ENGINE ROOM LIGHTS	0229	GENERATOR 2
0034	AMPLIFIER	0508	CLOCK	0156	ENGINE ROOM OUTLETS	0454	GENERATOR OFF ON START
0035	ANCHOR LIGHT	0099	CLOSET LIGHT	0157	ENGINE ROOM PANEL MAIN	0230	GENERATOR ROOM BLOWER
0036	ANCHOR LIGHT MAIN	0575	CO DETECTOR	0170	ENGINE SHUTDOWN	0466	GENERATOR RUNNING
0037	ANCHOR LIGHT MIZZEN	0100	COCKPIT LIGHTS	0171	ENGINE TEMP	0455	GENERATOR STOP
0038	ANCHOR WASH DOWN	0101	COCKPIT REFRIG	0546	ENGINES	0578	GFCI
0039	APPLIANCES	0102	COLOR SOUNDER	0172	ENTERTAINMENT CENTER	0231	GFI OUTLET
0040	ARCH LIGHTS	0103	COMM ELECTRONICS	0173	ENTRANCE DOOR	0232	GPS
0041	AUDIO/VIDEO SYSTEM	0104	COMPARTMENT HEATER	0174	ENTRY STEP	0233	GPS/LORAN
0525	AUTO FILL	0105	COMPARTMENT LIGHT	0175	EXHAUST FAN	0234	GPS/PLOTTER
0042	AUTO/MAN	0106	COMPASS LIGHT	0176	EXHAUST TEMP	0510	GUN LOCKS
0555	AUTO/MAN	0107	COMPUTER	0177	EXTERIOR	0235	GYRO COMPASS
0524	AUTOMATIC CHARGING RELAY	0514	COMPUTER DISPLAY	0178	EXTERIOR LIGHTS	0236	HAILER
0043	AUTOPILOT	0108	CONDENSER PUMP	0179	FAN	0237	HALLWAY LIGHTS
0044	BAIT PUMP	0109	CONSOLE LIGHT	0180	FAN 2	0238	HALON FIRE SYSTEM
0045	BAITWELL	0110	CONVERTER	0181	FAN 3	0239	HAM RADIO
0046	BALLAST CONTROLS	0111	COOKING GRILL	0182	FAN 4	0240	HEAD
0047	BALLAST PUMP	0112	COOKTOP	0183	FAX	0241	HEAD 2
0048	BAR	0113	COOLING PUMP	0184	FILLING PUMP	0242	HEAD 2 FAN
0481	BATHROOM	0114	COURTESY LIGHTS	0185	FIRE ALARM	0243	HEAD 2 OUTLETS
0049	BATTERY	0115	CREW LIGHTS	0186	FIRE EXT	0244	HEAD 3
0473	BATTERY 1	0116	CREW QUARTERS	0187	FIRE HORN	0245	HEAD 3 FAN
0474	BATTERY 2	0117	DAVIT	0459	FISH FINDER	0246	HEAD 3 OUTLETS
0050	BATTERY CHARGER	0118	DC LIGHTS	0538	FISHBOX DRAIN	0247	HEAD 4
0051	BATTERY CHARGER 2	0119	DC MAIN	0188	FISHBOX ICEMAKER	0248	HEAD 4 FAN
0052	BATTERY COMPARTMENT	0120	DC OUTLETS	0520	FISHBOX PUMP	0249	HEAD 4 OUTLETS
0053	BATTERY PARALLEL	0121	DC REFRIGERATOR	0521	FISHBOX REFRIGERATOR	0250	HEAD FAN
0560	BATTERY SWITCH	0122	DC SUB PANEL	0189	FISHING LIGHT	0251	HEAD LIGHTS
0054	BEACON	0123	DECK	0487	FISHWELL PUMP	0252	HEAD LIGHTS 2
0480	BEDROOM	0124	DECK LIGHTS	0488	FISHWELL PUMP 2	0253	HEAD LIGHTS 3

## Individual Square and Large Format Panel Labels, Continued

Label No.	Label Text	Label No.	Label Text	Label No.	Label Text	Label No.	Label Text
0254	HEAD LIGHTS 4	0314	MAIN SAIL FURLING	0370	SAT/COM	0432	VHF
0255	HEAD OUTLETS	0315	MAP LIGHT	0371	SAT/NAV	0511	VHF 1
0256	HEADLIGHTS	0572	MARINE SANITATION DEVICE	0372	SATELLITE DISH	0512	VHF 2
0257	HEATER	0316	MAST LIGHTS	0373	SCRUBBER	0433	VIDEO PLOTTER
0519	HEATER & AIR CONDITIONER	0317	MASTHEAD LIGHT	0374	SEARCHLIGHT	0434	VIDEO SYSTEM
0258	HEATER 2	0551	MEMORY	0375	SEARCHLIGHT HAND HELD	0543	WASHDOWN
0259	HEATER 3	0574	MERCATHODE	0376	SEARCHLIGHT REMOTE	0513	WASHDOWN PUMP
0260	HEATER 4	0318	MICROWAVE	0377	SEAWATER TEMP	0435	WASHER
0261	HELM ELECTRONICS	0319	MINI DISC PLAYER	0378	SEAWATER WASH DOWN	0436	WASHER/DRYER
0262	HELM GAUGES	0320	MIZZEN FLOOD	0379	SECURITY SYSTEM	0437	WATER ALARM
0263	HELM INSTRUMENTS	0456	NAV LIGHT ANCHOR OFF NAV	0380	SHIP	0562	WATER GAUGE
0264	HIGH WATER ALARM	0321	NAV STATION ELECTRONICS	0381	SHORE	0438	WATER HEATER
0265	HOLDING TANK	0322	NAV STATION GAUGES	0463	SHORE 1	0439	WATER LEVEL
0266	HOLDING TANK ALARM	0323	NAV STATION INSTRUMENTS	0464	SHORE 2	0440	WATER MAKER
0267	HOLDING TANK PUMP	0324	NAV STATION LIGHTS	0382	SHORE CORD REEL	0441	WATER PRESSURE
0268	HOOD FAN	0325	NAVIGATION ELECTRONICS	0383	SHORE POWER	0442	WATER PUMP
0269	HOOD LIGHT	0326	NAVIGATION INSTRUMENTS	0384	SHORE POWER CORD	0443	WEATHER FAX
0270	HORN	0327	NAVIGATION LIGHTS	0385	SHOWER SUMP PUMP	0444	WEATHER INSTRUMENT
0475	HOT TUB	0565	NETWORK	0386	SINK DRAIN	0571	WIFI
0271	HOT WATER PUMP	0328	NIGHT LIGHTS	0486	SLIDEOUT	0553	WINCH
0548	HOUSE	0329	OFF	0387	SOLAR PANEL	0445	WINCHES
0549	HOUSE/ENG	0331	OIL CHANGE PUMP	0388	SONAR	0477	WIND GENERATOR
0550	HOUSE/GEN	0563	OIL GAUGE	0542	SONAR/ACC	0446	WIND INSTRUMENTS
0272	HYDRAULIC ALARM	0332	ON	0389	SPARE	0522	WIND SHIELD VENT
0273	HYDRAULIC SYSTEM	0330	ON-OFF	0390	SPEED/LOG	0447	WINDEX LIGHT
0274	HYDRAULIC TANK ALARM	0333	OUTLETS	0391	SPREADER LIGHTS	0448	WINDLASS
0570	HYDRAULIC VALVE	0334	OUTLETS 2	0392	SPREADER LT MIZZEN	0449	WINDSHIELD WASHER
0275	ICE MAKER	0335	OUTLETS 3	0393	SSB	0472	WIPER CENTER
0276	IGNITION	0336	OUTLETS 4	0394	STABILIZER	0450	WIPER PORT
0277	IGNITION PORT	0505	OUTLETS AFT	0558	STAIR LIGHT	0451	WIPER STBD
0278	IGNITION STBD	0337	OUTLETS DECK	0395	STARBOARD	0452	WIPERS
0279	INSTRUMENT LIGHTS	0506	OUTLETS ENGINE ROOM	0396	START	0557	WIRELESS
0280	INSTRUMENTS	0338	OUTLETS EXTERIOR	0398	START PORT		
0281	INTERCOM	0503	OUTLETS FORWARD	0399	START STBD		
0282	INTERCOM HAILER	0339	OUTLETS INTERIOR	0397	START-STOP		
0283	INTERCOM/TELEPHONE	0504	OUTLETS PILOT HOUSE	0541	STBD FISHBOX		
0284	INTERIOR LIGHTS	0458	PANEL LIGHTS	0533	STBD LIVEWELL		
0556	INTERNET	0496	PILOT HOUSE FAN	0400	STBD THRUSTER		
0285	INVERTER	0340	PORT	0401	STEAMING LIGHT		
0467	INVERTER 2	0540	PORT FISHBOX	0569	STEERING VALVE		
0476	INVERTER AC BUS	0534	PORT LIVEWELL	0402	STEP LIGHT		
0471	INVERTER AC SUPPLY	0341	PORT THRUSTER	0403	STEREO		
0470	INVERTER DC SUPPLY	0552	PORT/STBD ENG	0577	STEREO MEMORY		
0286	INVERTER OUTLET	0342	POWER	0404	STERN LIGHT		
0287	ISOLATION TRANSFORMER	0343	POWER WASHER	0509	STERN THRUSTER		
0479	KITCHEN	0457	PRE-HEAT	0405	STOP		
0484	KITCHEN SLIDEOUT	0344	PRIMARY WINCHES	0406	STOVE		
0288	KNOTMETER	0345	PRINTER	0407	STOVE/MICROWAVE		
0289	LAZARETTE LIGHTS	0346	PUMP	0408	STROBE LIGHT		
0290	LECTRASAN	0497	PUMP BLACK WATER	0409	SUB PANEL		
0291	LIGHTER	0498	PUMP GRAY WATER	0410	SUMP PUMP		
0292	LIGHTS	0554	PUMPOUT	0411	SUMP PUMP 2		
0293	LIGHTS 2	0347	RACK LIGHTS	0412	SYNCHRO		
0294	LIGHTS 3	0348	RACK OUTLETS	0564	TANK GAUGE		
0295	LIGHTS 4	0349	RADAR	0413	TAPE DECK		
0296	LIGHTS AFT	0350	RADAR ARCH LIGHTS	0414	TELEPHONE SYSTEM		
0494	LIGHTS AFT CABIN	0351	RADIO	0415	TEST		
0297	LIGHTS FWD	0352	RANGE	0416	TOWING LIGHTS		
0493	LIGHTS MASTER CABIN	0579	RCBO	0417	TRACK LIGHTS		
0495	LIGHTS PANTRY	0353	RDF	0465	TRANSFER		
0492	LIGHTS PILOTHOUSE	0483	REAR SLIDEOUT	0418	TRANSFER PUMP		
0298	LIGHTS PORT	0354	RECEIVER	0419	TRANSFORMER		
0491	LIGHTS SETTEE	0355	RECEPTACLE	0518	TRANSFORMER SECONDARY		
0299	LIGHTS STBD	0356	REFRIGERATOR	0420	TRASH COMPACTOR		
0300	LIVEWELL	0357	REFRIGERATOR PUMP	0478	TRAVEL LOCKS		
0301	LIVEWELL INPUT	0358	REFRIGERATOR/FREEZER	0421	TRICOLOR LIGHT		
0302	LIVEWELL OUTPUT	0359	REGULATOR	0422	TRIM TABS		
0303	LOCKER LIGHTS	0360	REVERSE POLARITY	0527	TROLLING MOTOR		
0304	LOG	0361	ROD LOCKER	0423	TV		
0305	LORAN	0489	RUDDER ANGLE INDICATOR	0424	TV ANTENNA		
0306	LPG CONTROL	0362	RUNNING LIGHTS	0425	TV/STEREO		
0307	LUBE OIL PUMP	0363	SAILING CONTROLS	0426	TV/VCR		
0308	MACERATOR PUMP	0364	SAILING INSTRUMENTS	0535	UNDERWATER LIGHT		
0309	MAIN	0365	SALOON	0427	UPS SYSTEM		
0310	MAIN BREAKER	0366	SALOON HEATER	0428	UTILITY		
0311	MAIN CABIN	0367	SALOON LIGHTS	0429	VACUUM		
0312	MAIN CABIN LIGHTS	0368	SALOON OUTLETS	0430	VACUUM PUMP		
0313	MAIN CABIN OUTLETS	0369	SALT WATER PUMP	0431	VCR		