

Blue Sea Systems offers two choices for below deck electrical distribution panels

Blue Sea Systems' stock Traditional Metal and 360 Panel System panels give boaters, installers, and OEMs a wide range of available functions. This article lists these functions, and explains some of the differences between the two types of panels.

AVAILABLE FUNCTIONS

Stock Traditional Metal and 360 Panel System Panels

	TRADITIONAL METAL	360 PANEL SYSTEM
Battery management	✓	✓
C-Series DC circuit breakers	✓	✓
DC branch	✓	✓
DC main	✓	✓
AC/DC combination	✓	✓
AC branch	✓	✓
AC main	✓	✓
Rotary switch source selection	✓	✓
Circuit breaker source selection	✓	✓
Analog meter mounting	✓	✓
Digital meter mounting	✓	✓
Integrated battery management		✓
ACR/remote battery switch control		✓
Thermal circuit breaker mounting		✓
Push-button reset-only circuit breakers		✓
Push-button reset-only with rocker switches		✓
C-Series 240V AC circuit breaker		✓
RCBO mounting		✓
DIN meter mounting		✓
2" round gauges		✓
Vessel Systems Monitor VSM 422		✓
12 Volt DC sockets		✓
Blank (for pad printing, starter button, phone jack)		✓

Traditional Metal Panels

Traditional Metal panels have long been a favorite of OEMs and installers. Their appearance matches many panels already found on boats. They are an ideal choice when replacing only one panel in a group, or when adding to an existing array of panels. The Traditional Metal panels are available in a wide variety of sizes and with functions from simple circuit breaker models to complex multi-source AC/DC configurations. Since the Traditional Metal panels start with a flat piece of aluminum, adaptability is limited. Changing or adding circuit breakers is possible in many panels, but further custom modification is generally not possible.

Traditional Metal Panels are Available a Variety of Configurations



PN 8059
Simple Circuit Breaker



PN 8085
Complex Multi-Source AC/DC

360 Panel System

The 360 Panel System represents the next generation in panel design. Its modular architecture mounts a broad array of panel modules, allowing multiple functions to be combined in a single panel.

The design accommodates future changes on a modular level (substituting a Vessel Systems Monitor for a digital multimeter, for example) as well as on a circuit breaker level. Every function available in a Traditional Metal panel is available in a 360 panel, along with a broad range of additional functions.

The 360 Panel System incorporates contemporary styling and design. Headers and footers conceal stainless steel mounting hardware, and square format labels are easy to replace. Standard flat rocker circuit breakers reduce the risk of accidental switching, and indicate OFF by clearly showing white.

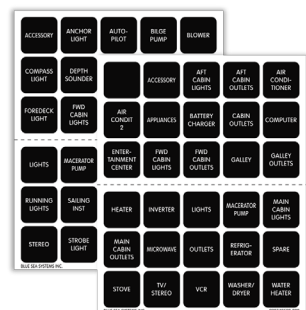
Installers will appreciate simplified wiring and the clean appearance of the rear of the 360 Panels. Remote bus bars and external shunts are included with all panels where they are required. ABYC-compliant AC back covers are included on AC/DC combination panels. Custom circuit identification labels, in English and other languages, are available in addition to the standard labels packaged with most 360 panels.

For more information and specifications of Blue Sea Systems panels, visit www.bluesea.com and click on the Distribution Panels link. The Panel Wizard, available on panelwizard.bluesea.com in December 2009, will provide a single resource to select standard panels or build a completely custom 360 Panel.

The illustration below shows some of the features of a stock 360 Panel and the accessories that ship with the 1204 Combination AC/DC Panel.

Headers and footers conceal stainless steel mounting hardware

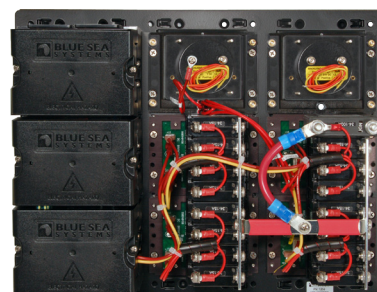
Circuit breakers installed in all positions



AC and DC Basic Labels



1204
Combination AC/DC Circuit Breaker Panel



1204 (back)

Standard flat rocker circuit breakers are flush in the ON position, reducing the risk of accidental switching, and indicate OFF by clearly showing white (black toggle circuit breakers are also available)



Instructions and full-sized mounting template



Remote BusBars



Shunt